

MSi

MANUFACTURING SOLUTIONS, INC.

ChamferMate® Model C3A

A compact, full-featured chamfering machine

NEW!

New heavy-duty features:

Rigid one-piece ductile iron vise, top plate and spindle housing

Linear ball rails

Heavy-duty three-bearing spindle

Electronic variable-speed drive

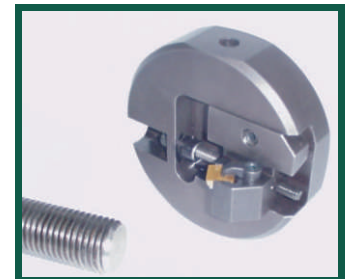
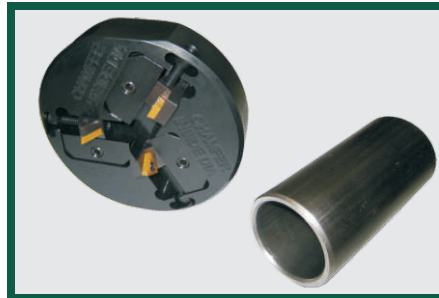
Call or e-mail for product videos.

STANDARD MODEL C3A FEATURES:

- 1/2" to 3" diameter capacity
- 500 to 2000 rpm electronic variable speed drive
- adjustable cutter head for OD chamfering
- totally enclosed cutting area with chip drawer
- fully adjustable feed rate
- through-the-spindle stop rod
- 3-HP / 3-phase motor
- forklift slots
- collet and tool rack on side
- compact 24" x 36" floor space

OPTIONS AVAILABLE:

- sliding stop for tubing or pipe
- three-tool head for ID, OD and facing of tubing or pipe
- 5-HP motor
- custom angle tool holders
- OD turning head
- center drill head
- pencil-pointing head
- casters
- coolant



MSi

MANUFACTURING SOLUTIONS, INC.

9485 College Street, Beaumont, Texas 77707
409-842-4404 | 800-831-1130 | fax: 409-842-9445
online at www.msi-tx.com | email: info@msi-tx.com